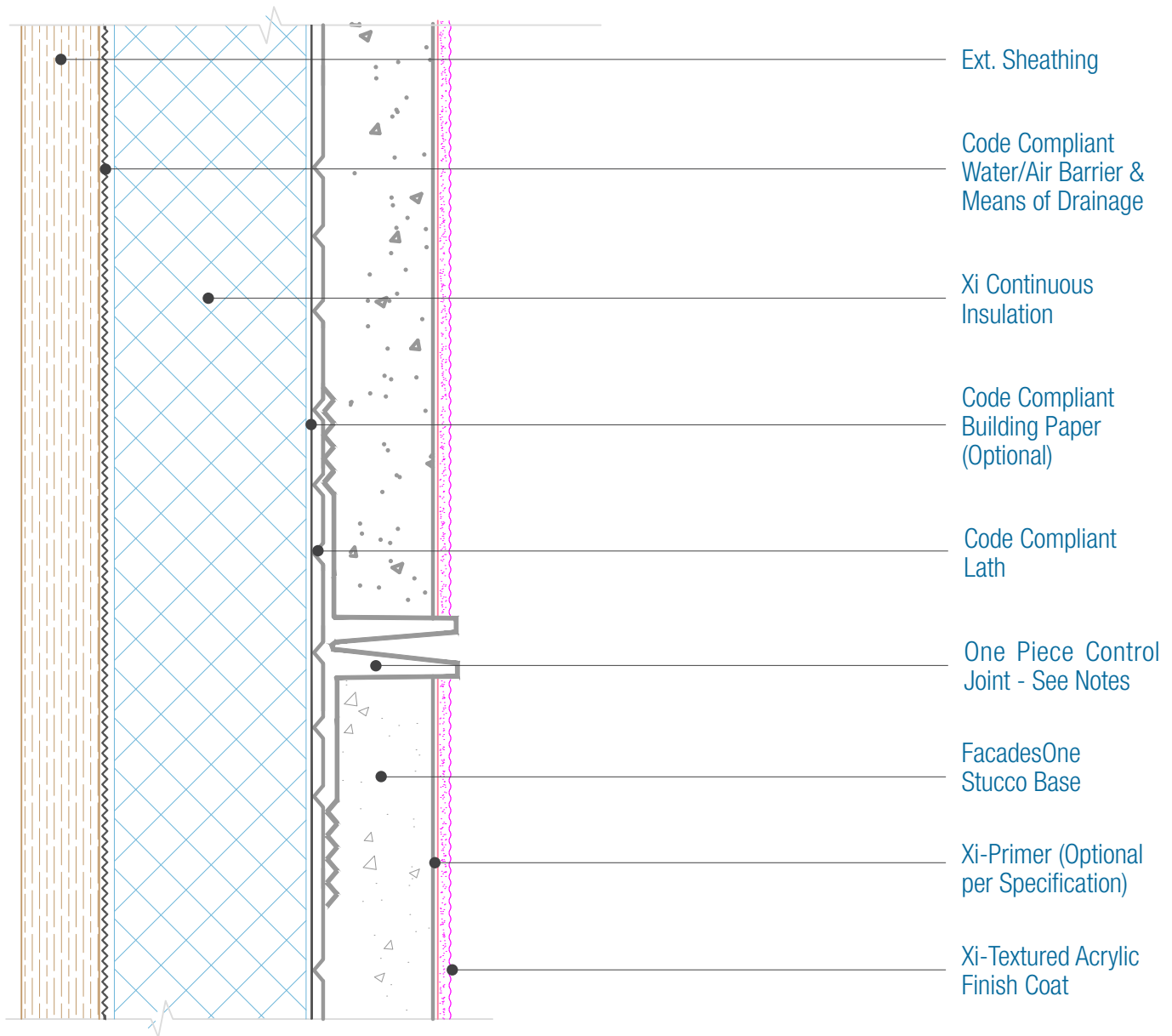




15262 Capital Port
 San Antonio, TX 78249
 1-800-611-6602
 facadesxi.com

FacadesOne Xi-Series Assembly Control Joint

Date. 06-15-2020 | Detail.F1FXI.III.2 v1



NOTES:

1. There must be continuous airtightness over the entire building enclosure, where required by code. The actual project detail must show this continuity.
2. The Lath is shown continuous behind the control Joint. This is allowed by FacadesXi however the decision is that of the designer and the building code official. See specifications for more information.
3. The Control joint may also be 2 Casing Beads back to back with a sealant joint, however the framing must be installed to allow the attachment of both casing beads to a structural member.
4. For full assembly options, materials and placement of materials refer to the specific FacadesXi System specifications.
5. Drainage is required per the current Evaluation Report. See Detail I.3 for material options.

DISCLAIMER: FACADESXI details are recommendations that should be used for guidance only. There may be equivalent means of installation that are not shown in FACADESXI assembly details. All FACADESXI products shall be installed in accordance with FACADESXI product datasheets and all applicable building codes and industry standard practices. The design, engineering and final details incorporating any FACADESXI product are the sole responsibility of the project design professional. FACADESXI is not responsible for determining the acceptability and/or applicability of any FACADESXI product or detail for any specific project or condition. FACADESXI disclaims all liability for improper installation, workmanship, or design by a third-party. EXCEPT FOR ANY EXPRESS REPRESENTATIONS AND WARRANTIES BY FACADESXI, ALL IMPLIED WARRANTIES OF ANY KIND, INCLUDING BUT NOT LIMITED TO WARRANTIES OF MERCHANTABILITY OR FITNESS FOR A PARTICULAR PURPOSE OR COMPLIANCE WITH LAWS OR GOVERNMENT RULES OR REGULATIONS APPLICABLE TO THE PROJECT, ARE HEREBY DISCLAIMED. FACADESXI's website should always be consulted for the latest version of any details and/or product information. Contact FACADESXI for any technical assistance.